

COSTA DEL SOL

ABOVE GROUND POOL

Injection-molded resin and super sturdy steel are the keys to this pool's incredible endurance!



ATLANTIC[™]
ABOVE GROUND POOLS

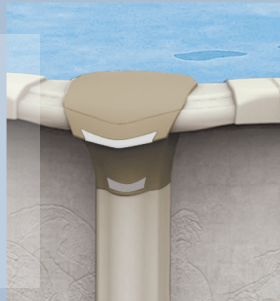
PLEASE FOLLOW SAFETY RULES. NO JUMPING. NO DIVING.

❖ Costa Del Sol™ — Antico/Ellipse wall

Injection-molded resin and super-sturdy steel are the keys to this pool's incredible endurance.

❖ top ledge

- 7-inch (18 cm) injected resin top ledge
- Ledge cover made from Synpro™ resin
 - Design that hides screws
 - Never chips or discolors

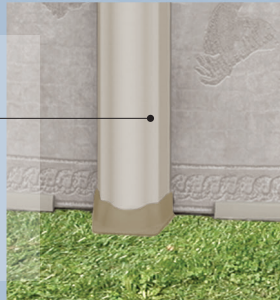


❖ y.e.s.

Yard Extender System
Invisible lateral supports on oval pools. For anyone who wants to make the most of their yard – and their pool!

❖ upright

- 7-inch (18 cm) fully supportive steel upright

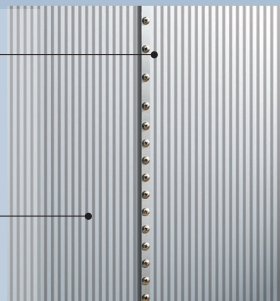


❖ Vog-lok™ system

- Pre-grooved parts to make screw installation easy
- Screws lock in place to maintain structural integrity

❖ wall joint

- Computer-designed wall joint ensures better resistance to water pressure
- Oversized bolts augment stability.



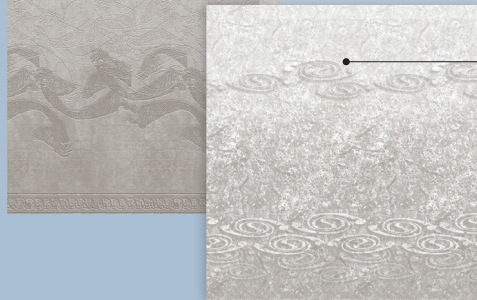
❖ corrugation

- A rippled finish lets the wall resist both water pressure and external shocks.



❖ Antico wall

❖ Ellipse wall



❖ water safety

Your above ground pool has been designed to provide you with years of safe, family fun. This entails that water safety must always be taken into account. When used incorrectly, your above ground swimming pool can be dangerous; above ground pools are shallow, and this makes diving and jumping unsafe. To ensure your above ground pool is used safely you must observe the safety precautions that are provided to you when you purchase an above ground pool and conform to all local regulations.

